



# PharmaChem Cosmetics Industries



WE MANUFACTURE MACHINERY & EQUIPMENTS FOR PHARMACEUTICAL, BIO PHARMA, BULK DRUG, FORMULATION, API, AYURVEDIC, HERBAL, FOOD, COSMETIC, CHEMICAL & BEVERAGES INDUSTRIES.

9 B / 14, RAM NAGAR, PREMSAMBANDH CHS, NEAR ASHOK NAGAR ROAD, BHANDUP - EAST, MUMBAI 400 042

SALES : +91 836 952 4009

WEB : [www.PharmaceuticalMachineMumbai.com](http://www.PharmaceuticalMachineMumbai.com)

GST : 27ARUPP3866G1Z1

EMAIL : [Pharmachemcosmetics@gmail.com](mailto:Pharmachemcosmetics@gmail.com)



## CHEMICAL EQUIPMENTS / PHARMACEUTICAL MACHINERY



← Tap Here to WhatsApp Now!





MODEL NO.	PCIF BD3	PCIF BD5	PCI FBD 15	PCI FBD 30	PCI FBD6 0	PCI FBD 120	PCI FBD 150	PCI FBD 200	PCI FBD 250	PCI FBD 300	PCI FBD 400	PCI FBD 500	PCI FBD 600
Drying Temperature °C	27 - 80 °C	27 - 80 °C	27 - 80 °C	27 - 80 °C	27 - 80 °C	27 - 80 °C	27 - 80 °C	27 - 80 °C	27 - 80 °C	27 - 80 °C	27 - 80 °C	27 - 80 °C	27 - 80 °C
Electrical Supply	3 Ph. AC	3 Ph. AC	3 Ph. AC	3 Ph. AC	3 Ph. AC	3 Ph. AC	3 Ph. AC	3 Ph. AC	3 Ph. AC	3 Ph. AC	3 Ph. AC	3 Ph. AC	3 Ph. AC



**AUTO RACKING SYSTEM**



**TELESCOPIC CYLINDER**



**SOLID FLOW MONITOR**



**FINGER BAG**



**INFLATABLE GASKET (AIR TUBE)**

# RAPID MIXER GRANULATOR

CAPACITY : 5 LTRS TO 1200 LTRS

mixer is designed to meet special needs of tablet manufacturing technology. This is achieved by reducing processing time, more homogenous mixing, uniformly of Granule size and above all maintaining improved hygenic standards with in the heighest GMP norms ( **PHARMACHEM COSMETICS INDUSTRIES** )

MODEL	RMG-10	RMG-25	RMG-50	RMG-100	RMG-150	RMG-250	RMG-400	RMG -600	RMG-1000
Gross Volume in Ltrs	10	25	50	100	150	250	400	600	1000
Working Volume in Ltrs	8	20	40	80	120	200	320	480	800
Main Motor HP	2 / 3	3 / 5	3 / 5	7.5 / 10	10 / 15	20 / 30	30 / 40	40 / 50	63 / 85
RPM Dual Speed	750 / 1500	750 / 1500	750 / 1500	750 / 1500	750 / 1500	750 / 1500	750 / 1500	750 / 1500	750 / 1500
Mixing Speed	75 / 150	75 / 150	75 / 150	75 / 150	75 / 150	75 / 150	75 / 150	75 / 150	75 / 150
Chopper HP	1 / 1.5	1 / 2	2 / 3	2 / 3	3 / 5	3 / 5	5 / 7.5	5 / 7.5	10 / 15
RPM Dual Speed	1440 / 2880	1440 / 2880	1440 / 2880	1440 / 2880	1440 / 2880	1440 / 2880	1440 / 2880	1440 / 2880	1440 / 2880
Weight In Kgs	200	900	1000	1400	1500	1800	2000	2500	3500

## OVER ALL DIMENSIONS ( **PHARMACHEM COSMETICS INDUSTRIES** )

Length	1450	1440	1700	2350	2400	2550	2880	3100	3300
Width	600	1000	750	1100	1430	2350	2450	2690	3150
Height	950	1310	1400	1750	2185	2050	2275	2510	3035
H - 1	1060	1345	1600	1900	2280	2585	2960	3250	3765



# PharmaChem Cosmetics Industries

WEB : [www.PharmaceuticalMachineMumbai.com](http://www.PharmaceuticalMachineMumbai.com)

EMAIL : [Pharmachemcosmetics@gmail.com](mailto:Pharmachemcosmetics@gmail.com)

## HOT AIR TRAY DRYER

MODELS	TD-12	TD-24	TD-48	TD-96	TD-192
Loading capacity	12 Trays	24 Trays	48 Trays	96 Trays	192 trays
External Dimension in mm	W D H 1370 x 530 x 940	W D H 1370 x 940 x 940	W D H 1980 x 1020 x 1880	W D H 3320 x 1900 x 1880	W D H 3320 x 1900 x 1880
Internal Dimension in mm	840 x 430 x 840	840 x 860 x 840	1020 x 930 x 1830	1960 x 930 x 1830	1960 x 930 x 1830
No of Doors	One	One	One	Two	Two
No of Blowers	One	Two	One	Two	Four
No of motors / H.P. 3 phase 415 volts	1 no / 0.5 H.P.	1 no / 0.5 H.P.	1 no / 1 H.P.	2 Nos / 1 H.P.	4 Nos / 1 H.P.
Electrical Heating 100°C / 200°C / 300°C	3 kw / 6 kw / 9 kw	6 kw / 9 kw / 12 kw	9 kw / 15 kw / 18 kw	15 kw / 21 kw / 27 kw	36 kw / 42 kw / 48 kw
Steam Heater No. of coils	2	2	2	2	2
Steam Pressure	3.3 kg/cm2	3.3 kg/cm2	3.3 kg/cm2	3.3 kg/cm2	3.3 kg/cm2
Steam consumption	25 LBS / hrs	45 LBS / hrs	60 LBS / hrs	80 LBS / hrs	120 LBS / hrs
Insulation in mm 100°C / 200°C / 300°C	50 / 75 / 75	50 / 75 / 75	50 / 75 / 75	50 / 75 / 75	50 / 75 / 75
No of Trolleys	Rack System	Rack System	One	Two	Four
Tray Size	812 x 406 x 32	812 x 406 x 32	812 x 406 x 32	812 x 406 x 32	812 x 406 x 32
Trolley Dimension	Fixed Racks	Fixed Racks	840 x 960 x 1780	840 x 960 x 1780	840 x 960 x 1780



# PharmaChem Cosmetics Industries

WEB : [www.PharmaceuticalMachineMumbai.com](http://www.PharmaceuticalMachineMumbai.com)

EMAIL : [Pharmachemcosmetics@gmail.com](mailto:Pharmachemcosmetics@gmail.com)

## VIBRO SIFTER

Vibro Separators are circular unitary gyratory screens used to separate mass composition of solids from solids, and for gradation of materials as per particle size, having wide range applications.

The structuring of the machine has been designed in order to achieve the multiple plane vibration by suitable assembly of the specially designed Vibratory motor (constructed for this purpose) having eccentric weight at the top and bottom ends of the motor shaft. The motor is mounted vertically at the centre of the screening assembly, on a circular base by means of springs which allow the Unit to vibrate freely. The springs absorb the vibrations and prevent them to be transmitted on the floor.

The top weight causes vibration in the horizontal plane which causes the material to move across the screen towards the Periphery. The lower weight acts to tilt the machine which causes vibration in the vertical tangential axis. The angle of lead of the lower weight with relation to the upper weight provides variable control of the screening pattern. Thus the material moves across the screen and also in the vertical and tangential planes enabling maximum screening.

### PHARMACHEM COSMETICS INDUSTRIES FEATURES :

- Double deck arrangement PHARMACHEM COSMETICS INDUSTRIES can be provided
- Safe earthing system
- Faster output at low power consumption
- High Degree of surface finish
- All contact parts made of SS 316 as per GMP standard
- Easy dismantling and cleaning

### Options Available

- Multi Deck screening GMP unit with SS 304 machine body base instead of MS
- Dust cover or lid for hopper assembly
- SS 316 contact parts
- Castor wheels for mobile unit

MODEL IN SIZE	VS 12	VS 30	VS 36	VS 48	VS 60	VS 72
MOTOR	0.25	0.5	1.5	2.0	3.0	3.0



# MULTI MILL

## APPLICATIONS :

Multimill is widely used for wet and dry granulation, pulverisation etc. in Pharmaceuticals, Chemicals, Cosmetics, Ceramics, Colours, Dyestuff, Food products etc. It also finds application in Pesticides, Fertilizers, Spices, Detergents, Insecticides, Plastic and Resins Industries.

## SALIENT FEATURES :

- Direction of beaters can be changed by reversible switch from knife to impact forward and vice-versa.
- All contact parts can be easily and quickly dismantled and cleaned.
- Multimill Machine is designed for continuous operation.
- Cylindrical screen for higher output.
- Castors provided for mobility.
- Flame proof electricals can be provided at extra cost.
- Beaters and scrapper blades of SS 410 quality are hardened and hard chrome plated.

## SPECIAL FEATURES

- All contact parts Ss304 / 316 / 316L AISI quality  
« Machine rated for continuous operation.
- High output with process uniformity.
- Direction of blade rotation by reversing switch.
- Various combinations of screens / speeds / number of blades / direction of rotation blade, can be selected.
- High screen opening area for higher through.
- All contact parts can easily be dismantled and cleaned for change of product. Wide range of SS perforated and wire knitted screen available.
- Dust free operation.
- Additional perforated screen at the bottom of pulverizing chamber of eliminate higher percentage of fines and control granule size more effectively and obtain higher outputs.
- Machine portable on castor wheels.



# PharmaChem Cosmetics Industries

WEB : [www.PharmaceuticalMachineMumbai.com](http://www.PharmaceuticalMachineMumbai.com)

EMAIL : [Pharmachemcosmetics@gmail.com](mailto:Pharmachemcosmetics@gmail.com)

## OCTAGONAL BLENDER / DOUBLE CONE BLENDER



We are a prime Octagonal Blender Manufacturer, Exporter and Supplier from Mumbai, Maharashtra. The Octagonal Blender, offered by us, is widely used in the Pharmaceutical Industry. Furthermore, our Octagonal Blender is highly acclaimed by the national as well as international clients for its efficiency.

### FEATURES :

- Discharge output via. Butter fly valve. (Pneumatic discharge can be provided)
- Safety guards provided with limit switch interlocked to motor which ensures safe operation
- Bump less rotation assured because of specially designed transmission chain sprocket
- All the contact parts made of SS 316 as per GMP standard
- Zero retention design
- To enhance the mixing, baffles are provided on central shaft
- Internal finish confirming 220 grits to 320 grits, outside mat finish 180 grits
- Charging drum arranged with Mechanical / hydraulic trolley JAY PHARM
- Safe earthing system
- Optional Accessories/ Attachments
- Flame Proof Construction
- PLC with MMI
- VFD

### APPLICATIONS :

- Blending of dried granules for tablets
- Blending of dry powders for capsules

### DOCUMENTATION :

- Documentation like DQ, IQ, OQ and FAT provided with the machine

## IPC BIN BLENDER / CONTA BIN BLENDER WITH IBC BIN



### SALIENT FEATURES :

- 0 stopping for easy docking and undocking of the bin.
- A suitable fencing around the cage with an entry point for the bin on detachable trolley.
- Limit switch on entry door to prevent the accidental operation of the cage.
- Flexibility of accepting variable bin sizes providing wide range of batch volumes.
- cGMP construction with clad polished S. S. sheets.
- The charging hole with cover is provided on top with quick opening and closing arrangement with dust proof joints for particle free transfer.
- Built-in Butterfly valve (150 mm dia) at the bottom suitable for discharge.
- Suitable leak proof vent on top.
- Capacity available 2 to 1000 Kgs.

### ADVANTAGES :

- Highly effective for low volume active blending with as low as 1 % active.
- Processing of different sizes of production batches in single equipment with scale up data.
- Dust-free operation in solid dosage processing area.
- No risk of De-blending on extended processing.
- Containerised transfer of processed material avoiding manual scooping.
- No Cleaning down time as the product container is mobile.

### APPLICATION :

- Blending of dry powder for capsules
- Blending of dried granules for tablets
- Closed system containment of processed powders / granules
- Single step transfer from Drying to Compression / Filling equipment with reduced material handling

## COATING PAN WITH SPRAY SYSTEM



The Conventional Coating Pan is simple unit, which employs the principle of rolling a batch of tablets in an elliptical pan, spraying the coating solution on it and passing hot air across the tablet bed. An exhaust blower may be used to carry away the excess fumes generated during the coating and drying process.

**PHARMACHEM COSMETICS INDUSTRIES** manufacturer Conventional Coating Pan of various capacities ranging from 12" lab model to 60" conventional types.

MODEL NO	PCI CP 12	PCI-CP- 20	PCI-CP- 24	PCI-CP- 30	PCI-CP- 36	PCI-CP- 48	PCI-CP- 60	PCI-CP- 72
Pan Dia In Inch	12	20	24	30	36	48	60	72
Loading Capacity	5 KG	10 KG	25 KG	40 to 60	60 to 80	100 to 120	150 to 200	200 to 250
Drive Motor HP	0.5	0.5	0.5	1	1	2	5	7.5
RPM of Pan	30 to 40							
Hot air blower motor HP	0.25	0.25	0.25	0.5	0.5	1	1	1
Blower capacity Maximum CFM	100	100	100	200	200	500	750	750
Heater K.W.	1 Kw	1 Kw	1.5 Kw	3.0 Kw	3.0 Kw	4.5 Kw	6.0 Kw	6.0 Kw

**APPLICATION : FOR FILM COATING, ENTERIC COATING AND SUGAR COATING SYSTEM.**

- PAN
- DRIVE
- HOT AIR BLOWER
- EXHAUST BLOWER WITH DUST COLLECTOR OR WET SCRUBBER
- WET SCRUBBER
- SPRAY SYSTEM
- SOLUTION PREPERATION INSULATED TANK
- PERISTALIC PUMP
- HOT AIR PUMP
- SPRAY GUN NOZZLE

# PharmaChem Cosmetics Industries

WEB : [www.PharmaceuticalMachineMumbai.com](http://www.PharmaceuticalMachineMumbai.com)

EMAIL : [Pharmachemcosmetics@gmail.com](mailto:Pharmachemcosmetics@gmail.com)

## FBD BOWL TILTING / LIFTING POSITIONING DEVICE



- It is an equipment operated hydraulically or mechanically for lifting and tipping FBD Bowl loaded with dried granules.
- Content of the Bowl is transferred smoothly to granulating equipment and through it to a BIN or on IPC container.
- It provides completely dust free mobile operation and eliminates tedious scooping or manual handling.
- The process consists of bringing the FBD Bowl beneath the Tipper. The inverted cone of the Tipper is lowered so that the brim flange of the bowl touches the brim flange of the inverted cone.
- Both are then clamped together with quick fixing clamps. The whole assembly is raised hydraulically to the required height and then rotated mechanically to 180 degree on Ms axis and lowered to a suitable height to align with the receiving container / equipment.
- The discharge point cone is fitted with an Iris / Butterfly valve by operating which the contents are discharged to Multi Mill or a sifter cum Multi Mill as per the process requirement.
- The flanged cone and the valve is of S.S.316 /304 material, as required.
- The bottom and the complete drives are covered with highly polished S.S.304 sheets to impart a cGMP finish.

### FEATURES :

- Stainless steel lift yoke with integral Gearbox for rotation of discharge cone and container
- Discharge cone clamps are made of stainless steel with ease of secure, clamping design.
- Control cabinet is in powder coated in M.S. and is tight, complete with hydraulic power pack and electric control.
- Complete fail safe design.
- Conforms to latest cGMP Standards.
- Discharge cone is fitted with a butterfly valve. The MOC is SS316 / 304.

# PharmaChem Cosmetics Industries

WEB : [www.PharmaceuticalMachineMumbai.com](http://www.PharmaceuticalMachineMumbai.com)

EMAIL : [Pharmachemcosmetics@gmail.com](mailto:Pharmachemcosmetics@gmail.com)

## VACUUM TRAY DRYER



- Main Body/Vacuum tray dryer chamber thick SS 316 plate with heavy duty SS 316 flange and stiffeners.
- Door thick SS 316 plate (Hemisphere shape) with heavy duty SS 316 flange.
- Shelves hollow type pads with SS 316 sheet and baffles.
- Condenser (shell & tube) & receiver SS 304 with isolation valve and flow glass in between to monitor condensation.
- Vacuum Tray Dryer machine in SS 316 rounded corners and edges.
- Explosion vent/ rupture disc on vacuum chamber.
- Pressure release valve in steam line.
- View and light glass provided on vacuum chamber door.
- Silicon transparent gasket for door.
- Nitrogen purging valve provided on vacuum chamber.
- Vacuum tray dryer break valve provided on vacuum chamber.
- Finishing : Internal 320 grit mirror polish and outer 180 grit mat finish.

MODEL IN SIZE	VTD 6	VTD 12	VTD 24	VTD 48	VTD 96
NO OF TRAYS	6	12	24	48	96
CAPACITY IN KGS	12 - 18	2 - 35	50 - 75	75 - 100	100 - 150
TRAY VOLUME IN LTRS / KG	5 TO 25	6 TO 14	6 TO 14	8 TO 16	10 TO 12
TRAY SIZE	812 LENGTH x 406 WIDTH x 32 HEIGHT mm				
NO OF HEATING SHELF'S	7	7	9	13	17

## STARCH PASTE KETTLE (WITH & WITHOUT ANCHOR STIRRER)



- The tilting paste kettle, is designed for paste preparation. It has a universal application resulting in uniform melting. This tank is designed to meet missing needs of wider range of products under varied operating conditions in chemicals, Foods, Cosmetics and Pharmaceutical Industry.
- The basic principle utilized in the design of this kettle is the jacket for passing steam in order to melt down the product to make paste. Paste kettle has an unique tilting arrangement for discharging the product.
  - All contact part made of SS 316 as per GMP standard.
  - Hemispherical design for proper mixing paste kettle.
  - Jacket provided with steam/thermic/fluid heating arrangement
  - Driven via motor and gear box assembly mounted on top.
  - Tilting arrangement for kettle is provided for discharge for starch paste.
  - Heating insulation provided to avoid heat loss.
  - Anchor type impeller design for proper mixing of paste.
  - Safe earthing system.
  - Paste Kettle available in Size from 10 to 500 lts.

### OPTIONAL ACCESSORIES

- Flameproof construction.
- VFD to chase the RPM of stirrer.

## PHARMACHEM COSMETICS INDUSTRIES STEAM & ELECTRIC HEATING KETTLE

## RIBBON BLENDER MIXER



Ribbon Blender comprises of a U-shaped horizontal trough and a specially designed Double Helical Ribbon Agitator rotating within. Ribbon Blenders are based on a proven agitator construction that provides a triple mixing action ensuring fast, efficient blending. The dimensions and configuration of the ribbons are carefully balanced to provide a movement of material within the container that avoids dead spots and gives rapid product discharge.

An alternate design is the paddle agitator. The paddles are positioned to move the material in opposing lateral directions as well as radially. The paddle design is generally employed where friable materials are being blended, and when batches as small as 15% of the total capacity are going to be mixed in the blender.

- Complete process of mixing and blending in one unit
- Working capacity from 50L to 25000L
- Suitable for mixing solids with solids and solids with liquids
- Shorter batch time due to contra mixing ribbons
- All contact parts are made of SS304/316L and mirror polished
- Flush plug valve from discharging finished product without dead zone
- The specifications of ribbon mixer comply with cGMP regulations
- It achieves consistent and high shear mixing
- Manufactured with high quality and durable materials
- Versatile design which can be used in a wide range of materials
- Able to achieve triple mixing action
- Clean and hygienic operating process

Ribbon blender with Screw conveyor, ribbon blender with bin, Ribbon blender with sifter, ribbon blender with product transfer input and output, liquid spray systems, working platform with variable speed drive or PLC base operation we offer as per customer product and process Horizontal ribbon mixers range from 50-25000 Ltrs or more capacity as per requested by customer.



HELICAL RIBBON - REVERSE FORWARD RIBBON

# PharmaChem Cosmetics Industries

WEB : [www.PharmaceuticalMachineMumbai.com](http://www.PharmaceuticalMachineMumbai.com)

EMAIL : [Pharmachemcosmetics@gmail.com](mailto:Pharmachemcosmetics@gmail.com)

## PRODUCT VACUUM CONVEYING (POWDER TRANSFER SYSTEM)

### BENEFITS FOR YOU :

- Effective and reliable system for transfer of powders and granules
- Dust free operations
- Batch time reduction
- Time savings
- Manpower savings
- Easy cleaning and maintenance

### TECHNICAL SPECIFICATIONS :

MODEL	GROSS CAPACITY (KG/HR)	PRIMARY FILTER VOLUME (LTRS)	SECANDARY FILTER VOLUME (LTRS)	BLOWER (CFM)	BLOWER MOTOR (HP)	APPROX WEIGHT (KGS)
PCI-PTS-500	250	30	50	200	2	300
PCI-PTS-500	500	30	50	310	3	380
PCI-PTS-1000	1000	50	70	310	3	450
PCI-PTS-1500	1500	50	70	350	5	520
PCI-PTS-2000	2000	80	80	420	5	650
PCI-PTS-3000	3000	80	80	550	7.5	700



# ROUND IPC BINS/ SQUARE IBC BINS / IBC CONTAINER

**PHARMACHEM COSMETICS INDUSTRIES** offers a variety of containers for your 'In-Process' material handling and storage needs. Each of these containers can be custom designed to meet your specifications of volume / weight to be contained within and transfer of material.

**PHARMACHEM COSMETICS INDUSTRIES** offers Circular Conical IBC, Circular Drums & Conta Bin / Blending IBC of varying capacities.

## Circular Conical IBC :

- Hermetically sealed intermediate Product Container
- Ergonomically designed handles and 60o angle of response for easy of material flow and handling
- P.U.Wheels and an inside / outside surface finish of <0.3 Ra

## Circular Drums :

- Perfect dimensions for loading / unloading operations for to & from blenders
- Built-in level-sensing port
- P.U.Wheels and an inside / outside surface finish of <0.3 Ra

## Conta Bin / Blending IBC :

- Square Hermetically sealed bins with loose detachable trolley
- Ideal for size 50L to 5000L
- P.U.Wheels and an inside / outside surface finish of <0.3 Ra



# PharmaChem Cosmetics Industries

WEB : [www.PharmaceuticalMachineMumbai.com](http://www.PharmaceuticalMachineMumbai.com)

EMAIL : [Pharmachemcosmetics@gmail.com](mailto:Pharmachemcosmetics@gmail.com)

## CIP WIP SYSTEM – WASHING STEAM CLEANING SYSTEM FOR EQUIPMENTS

Clean-in-place (CIP) is a method of cleaning the interior surfaces of pipes, vessels, process equipment, **filters** and associated fittings, without disassembly.

Closed systems were disassembled and cleaned manually. The advent of CIP was a boon to industries that needed frequent internal cleaning of their processes. Industries that rely heavily on CIP are those requiring high levels of hygiene, and include : **dairy, beverage, brewing, processed foods, pharmaceutical, and cosmetics.**

The benefit to industries that use CIP is that the cleaning is faster, less labor-intensive and more repeatable, and poses less of a chemical exposure risk. CIP started as a manual practice involving a balance tank, **centrifugal pump**, and connection to the system being cleaned. Since the 1950s, CIP has evolved to include fully automated systems with **programmable logic controllers**, multiple balance tanks, **sensors, valves, heat exchangers, data acquisition** and specially designed spray nozzle systems. Simple, manually operated CIP systems can still be found in use today.

Depending on soil load and process geometry, the CIP design principle is one of the following:

- deliver highly turbulent, high flow-rate solution to effect good cleaning (applies to pipe circuits and some filled equipment).
- deliver solution as a low-energy spray to fully wet the surface (applies to lightly soiled vessels where a static spray ball may be used).
- deliver a high energy impinging spray (applies to highly soiled or large diameter vessels where a dynamic spray device may be used).



# PharmaChem Cosmetics Industries

WEB : [www.PharmaceuticalMachineMumbai.com](http://www.PharmaceuticalMachineMumbai.com)

EMAIL : [Pharmachemcosmetics@gmail.com](mailto:Pharmachemcosmetics@gmail.com)

## COLLOIDAL MILL

Versatile compact colloid mill machine suitable for Homogenizing, dispersing, mixing, communicating more rapidly and emulsifying to give best results with an extremely high quality. The unit consists of stainless steel conical hopper, three way valve for drainage and recirculation, outlet nozzle and sprout rotor and stator assembly with 5 H.P. / 3 HP motor, DOL starter with overload relay and optional jacket for cooling or heating.

### APPLICATION :

It finds application of colloid mill machine manufacturer, supplier and exporter in various processes like grinding, homogenizing, emulsifying, dispersing, mixing, extracting etc. Catering to the needs of several industries, such as ( **PHARMACHEM COSMETICS INDUSTRIES** )

- Pharmaceutical industry.
- Food, flour, dairy, sweetmeats and confectionery industry.
- Chemical industry.
- Paint industry.
- Textile industry.
- Cosmetic and detergent industry.
- Cubber industry.
- Sausage production and meat packing industry.
- Starch industry.
- Paper industry

**CAPACITY : 10 KG TO 3500 KG**



## ROTOCONE VACUUM FILTER DRYER

Rotary Vacuum Dryer is suitable for drying of materials which cannot resist high temperature, material which are easily oxidised, volatile materials which should be retrieved, materials which are strong irritants and poisonous in nature. Rotary Vacuum Dryer with the improved technology integrates during operation under vacuum. The Rotary Vacuum Dryer facilitates enhanced drying efficiency, low temperature operations and economy of process by total solvent recovery. It helps cGMP based working by achieving optimum dust control, while offering advantages of efficient charging and discharging of materials. The drying unit equipped with lump breakers initially breaks large lumps and subsequently powders them (in single cone). The rotary action of the dryer together with mechanical action of the breakers, cuts down drying time and gives a lump free product.

### ADVANTAGES :

- Reduces drying time
- Eliminates need for re-drying of lumps
- Handling and exposure of final product is avoided
- Gives uniformity size dry product
- System can process crystalline or amorphous powders which are prone for lumps
- Easy to clean internal surface, thus ensuring purity of product
- Optimum and continuous vacuum maintenance during process
- Uniform material shuffling over the heated contact surface of the cone

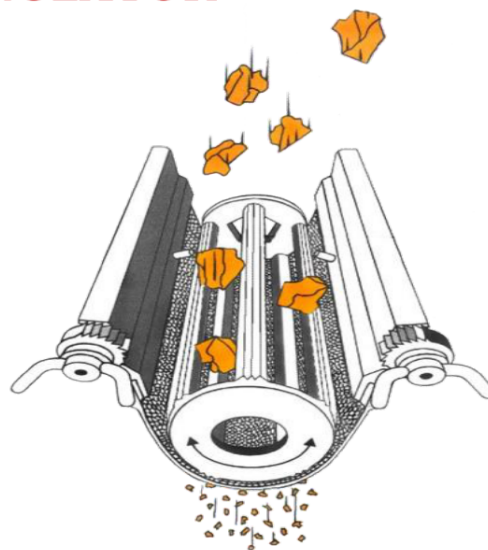


MODEL	RCVD 15	RCVD 100	RCVD 200	RCVD 300	RCVD 500	RCVD 750	RCVD 1000	RCVD 1500	RCVD 2000
Gross Volume Ltr	15	100	200	300	500	750	1000	1500	2000
Working Volume Ltr	9	60	120	180	300	450	600	900	1200
Cap. In Kg	5	30	75	100	175	250	350	500	700
RPM	6	6	6	6	6	6	6	6	6
Area Heat transfer m <sup>2</sup>	0.5	3.5	4.2	5.0	6.0	7.0	8.0	9.5	11
Cyclone Separator in Ltrs	1	5	7	10	15	20	25	30	40
Condenser in m <sup>2</sup>	0.1	0.5	0.75	1.0	1.5	2	2.5	3.0	4.0
Receiver in Ltrs	3	20	40	50	75	100	150	200	250
Charging Ht in mm	700	1350	1500	1650	1800	2000	2300	2500	2650
Discharging Ht in mm	300	600	650	650	700	650	750	750	750
Charging Size in mm	Φ150	Φ250	Φ300	Φ300	Φ350	Φ400	Φ400	Φ450	Φ500
Discharging Size in mm	Φ75	Φ125	Φ150	Φ150	Φ175	Φ200	Φ200	Φ225	Φ250
Gear Box	2"	2.5"	3"	3"	4"	4"	5"	6"	6"
Main drive motor	0.5 HP	2 HP	3 HP	3 HP	5 HP	5 HP	7.5 HP	10 HP	10 HP
Lump Breaker motor	--	--	--	0.25 HP	0.25 HP	0.5 HP	0.5 HP	0.5 HP	1 HP

**Design Temp : 200°C, Testing : Vacuum side Full vacuum up to 750 mm of Hg & Steam / Hot water Jacket side 5 Kgs/cm<sup>2</sup> pressure test.**

<b>OVER ALL DIMENSIONS (Approximately) :</b>									
Length in mm (with Cyclone)	850	1600	1850	2050	2250	2700	3000	3250	3600
Length in mm (with Cyclone, Condenser & Receiver)	1100	2000	2250	2500	2750	3200	3600	4000	4500
Width In mm (with Safety Gaurds)	550	1200	1300	1450	1600	1800	2100	2350	2600
Height in mm	750	1600	1775	1900	2000	2350	2600	2850	3000
Weight in Kg (Aprox)	400	800	900	1000	1200	1600	2000	2500	3200

## OSCILLATING GRANULATOR



- Oscillating rotor with back and forth motion for even distribution of material
- SS construction (AISI 316 / 316L)
- Inside polished Ra = 0.8 micron, outside ground (grain 220)
- Maintenance free design, GMP execution
- Multiple varieties of sieves, fine sieves & perforated plates available to suit all your needs
- Range 0.5 mm to 10 mm
- Robust, Simple & Compact Design
- Easy Installation in Production Line
- Low noise level as per international norms
- Easy for Cleaning
- High output with uniform sized granules and less fines
- Easy maintenance

PharmaChem Cosmetics Industries Oscillating Granulator is ideal for meeting the multiple needs of Dry Granulation, Wet Granulation, Screening, Crushing, Breaking lumps, etc for the Pharmaceutical and Nutraceutical industry. The oscillating motion of the rotor with uniform speed and force applied to the material, improves the granulating process and enhances the compressibility of the product.

MODEL	GROSS CAPACITY	WORKING CAPACITY	OVERALL DIMENSIONS			MOTOR HP	APPROX. WEIGHT
			L	B	H		
PCI - OG - 250	250 Kgs	250 Kgs	1250 mm	1600 mm	1600 mm	3 HP	600 Kgs
PCI- OG - 500	500 Kgs	500 Kgs	1250 mm	1600 mm	1800 mm	5 HP	900 Kgs

# PharmaChem Cosmetics Industries

WEB : [www.PharmaceuticalMachineMumbai.com](http://www.PharmaceuticalMachineMumbai.com)

EMAIL : [Pharmachemcosmetics@gmail.com](mailto:Pharmachemcosmetics@gmail.com)

## CENTRIFUGE MACHINE / HYDRO EXTRACTOR

### CONSTRUCTION DETAILS :

#### BASKET :

It can be fabricated from M.S. Plate / S.S. / M.S. with Rubber Lined/ M.S. with F.R.P. coating, perforated speed to allow free discharge. Suitable thick to withstand the load caused by centrifugal force while rotating and well balanced. The cone of the basket is made of Graded Grey C.I. and having cladding of S.S.

#### LID / OUTER BODY :

It can be fabricated from M.S. Plate / S.S. / M.S. with rubber lined / M.S. with F.R.P. Coating with top cover and ring and bottled with bottom base.

#### SHAFT AND BEARING :

Main shaft made of EN-8 and suitably thick to withstand the loads imposed by centrifugal force caused by normal uneven distribution of charge in basket Main shaft having 4 Nos. of ball / roller / thrust heavy duty bearings with grease retainers to ensure good lubrication. Grease cup provide for easily greasing.

#### CLUTCH PULLEY :

Very efficient & economical to reduce the initial starting load on Elec. Motor & to provide gradual acceleration. Having roller bearings and ferodo liner.

#### SUSPENSION :

Having 3 Nos. of heavy duty, sturdy, C.I. Legs with spring steel springs to prevent vibration.

#### BRAKE :

Specially designed very efficient hand / show brake, mechanically designed with ferodo liner which can stop the basket in 5 - 10 Mins.

#### BASE FRAME :

Entire Centrifuge fitted on M.S. Channel base frame and comes to you in assemble condition.

#### RUBBER LINING :

Centrifuge having Natural hard type Ebonite rubber of shore "D" quality & Hardness will



## CENTRIFUGE MACHINE TECHNICAL DATA :

MODEL	Basket Height	Motor H.P. / RPM.	Basket Capacity to Produce Cake Kgs.	Centrifugal Force "G" Unit	Basket Diameter
PCI - 24	15"	5 / 1500	50 - 75	510	24"
PCI - 36	18"	10 / 1000	130 - 175	510	36"
PCI - 48	18"	15 / 800	240 - 300	410	48"
PCI - 60	18"	20 / 600	300 - 350	310	60"

## PROCESS REACTION VESSEL (STAINLESS STEEL REACTOR VESSEL)

PHARMACHEM COSMETICS INDUSTRIES is One Of The Leading Engineering Company Engaged In Designing, Manufacturing & Supply Of Limpet Coil Reaction Vessel, Chemical Reactor, Resin Manufacturing Plant, Urea Formaldehyde Resin Manufacturing Plant, **Polyester Resin Manufacturing Vessel**, Gmp Reaction Vessel, Pharma Preparation Vessel, **Injectable Manufacturing Vessel**, **Jacketed Reaction Vessel**, Chemical Reactor Jacketed Vessel, **Limpet Coil Reactor**, Distillation Column, Distillation Equipments, Shell & Tube Heat Exchanger, Chemical Tanks, Pharmaceutical And Chemical Machineries Such As Blender, Multi Mill, Heat Exchanger, **Reaction Vessels** Etc. PCI Is Engaged Into Pharmaceutical Turnkey Project Export To The International Market. PCI Offers Complete Solution For Setting Up **Pharmaceutical Formulation Projects** Including Layout Designs, Detailed Engineering, Capacity Calculation Based On Client Input, Engineering Specifications, HVAC System Design, On-Time Supply Of Equipment, Installation, Commissioning, Etc. Has A Pool Of Dedicated Professionals From The Field. We Work Closely With Our Client And Offer Personalized And Cost Effective Solutions. The Strength Of The Company Lies In Meeting Its Commitments To Its Client. Apart From Pharmaceutical, Biotech & Veterinary PCI Also Works For Cosmetic, Food, Chemical & **Distillery Plants**. Our Vision Is To Deliver Well Engineered, High Quality Equipments Equivalent To International Standards & Meeting The Client's Requirement At Reasonable Prices. PCI Take Pride In Supplying Most Economical, Sturdy And Easily Maintainable Machines To Suit The Requirements Of Our Customer's Individual Specific Requirements.



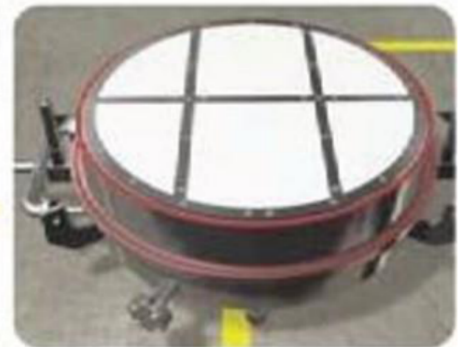
**WORKING VOLUME CAPACITY : 500 LTRS TO 30 KL**

# PharmaChem Cosmetics Industries

WEB : [www.PharmaceuticalMachineMumbai.com](http://www.PharmaceuticalMachineMumbai.com)

EMAIL : [Pharmachemcosmetics@gmail.com](mailto:Pharmachemcosmetics@gmail.com)

## AGITATED NUTCH FILTER DRYER

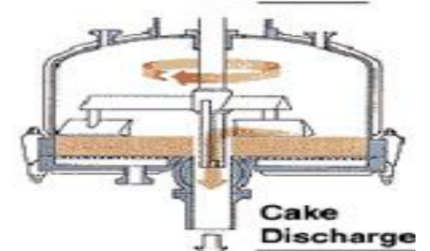
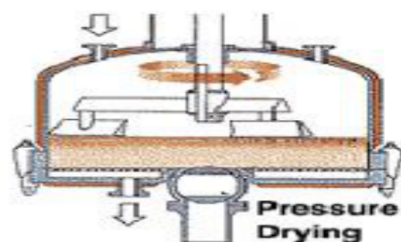
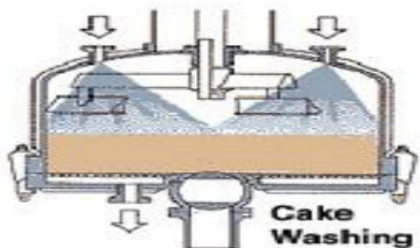
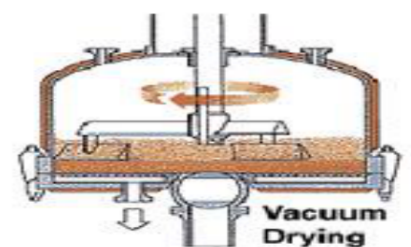
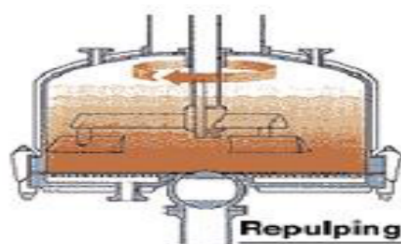
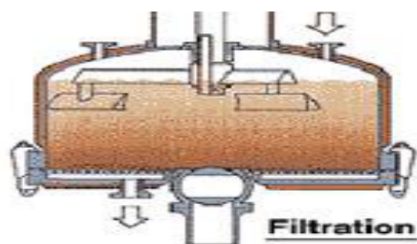


### SALIENT FEATURES :

- Designed and Manufactured to suit critical hygienic conditions of pharma and food industries. (cGMP MODEL).
- Operated by hydraulic cylinders and held tightly with zero leakage.
- Offered in various materials of constructions, like stainless steel, Hastelloy, Titanium, carbon steel, rubber lined carbon steel and lead lined carbon steel.
- Offered in a wide range of filtration area capacities from 25 Lits upto 10000 Lits.
- Method of operation is totally enclosed, neat and hygienic. These conditions are excellent for solvent recovery, Hollow Shaft and Hollow Blades for thorough drying.
- Suitable for handling of sterile compounds or toxic and hazardous materials without human intervention.
- Enables easy non-manual and automatic cake / solid discharge. Scraper blade is provided to scrap the material which may stay on shell.
- Hollow Shaft and Hollow Blades for thorough drying.
- Specially designed tank cleaning nozzle is provided for thorough cleaning of inside of filter body. (CIP)

## TECHNICAL SPECIFICATIONS :

MODEL	ANFD-50	ANFD-100	ANFD-200	ANFD-300	ANFD-500	ANFD-1000	ANFD-1500	ANFD-2000	ANFD-3000	ANFD-5000
WORKING VOLUME	50	100	200	300	500	1000	1500	2000	3000	5000
CAKE VOLUME	25	50	100	150	200	400	750	1000	1500	2500
FILTER AREA	0.2	0.4	0.5	0.6	0.75	1.1	1.5	2	3	5
VESSEL DIA	425	600	700	800	1000	1200	1400	1600	2000	2500
VESSEL HT	400	400	550	600	600	900	1000	1000	1000	1000
BOTTOM OPENING STROKE	300	300	300	300	300	300	300	300	300	300
DISCHARGE VALVE ID	150	150	200	200	250	300	300	400	450	450
AGITATOR RPM	10	10	10	10	10	10	10	10	10	10
AGITATOR DRIVE	1	1	2	3	5	7.5	10	12.5	15	20
AGITATOR VERTICAL STROKE	200	200	200	200	250	250	300	400	450	450
AGITATOR UP DOWN SPEED	250	250	250	250	250	250	250	250	250	250
OVERALL DIMENSION	1300 X 1300 X 2400	1500 X 1500 X 2500	1700 X 1700 X 3000	1800 X 1800 X 3000	2000 X 2000 X 3300	2200 X 2500 X 3675	2300 X 2300 X 3800	2500 X 2500 X 3800	2800 X 2800 X 4375	3500 X 3500 X 4600
DESIGN PRESSURE	VESSEL - FULL VACUUM, JACKET / LIMPET - 4 BAR									
DESIGN TEMP	150 DEGREE									
FINISH	INTERNAL : 240GR. MIRROR FINISH , EXTERNAL : 180GR. MATT FINISH									



# PharmaChem Cosmetics Industries

WEB : [www.PharmaceuticalMachineMumbai.com](http://www.PharmaceuticalMachineMumbai.com)

EMAIL : [Pharmachemcosmetics@gmail.com](mailto:Pharmachemcosmetics@gmail.com)



## ZERO HOLDUP FILTER PRESS

Types	Diameter of Plate	No. of Plates	Filtering Area M2	Cake Capacity	Output Ltrs / Hrs
PCI 8 x 6	8"	6	0.1886 m2	4.34 liters	400
PCI 8 x 8	8"	8	0.2260 m2	5.79 liters	500
PCI 14 x 8	14"	8	0.6130 m2	27.78 liters	1000
PCI 14 x 10	14"	10	0.7960 m2	34.72 liters	1200
PCI 18 x 12	18"	12	1.745 m2	78.01 liters	4000
PCI 18 x 15	18"	15	2.169 m2	40.50 liters	5000
PCI 18 x 23	18"	23	3.338 m2	63.49 liters	7000
PCI 24 x 10	24"	10	2.53 m2	142.56 liters	9000
PCI 24 x 18	24"	18	4.37 m2	113.12 liters	16,200
PCI 24 x 13	24"	13	3.22 m2	185.33 liters	11700
PCI 24 x 24	24"	24	5.75m2	150.81liters	21000

### CENTRAL FEEDING OF UNFILTERED LIQUID ENSURES :

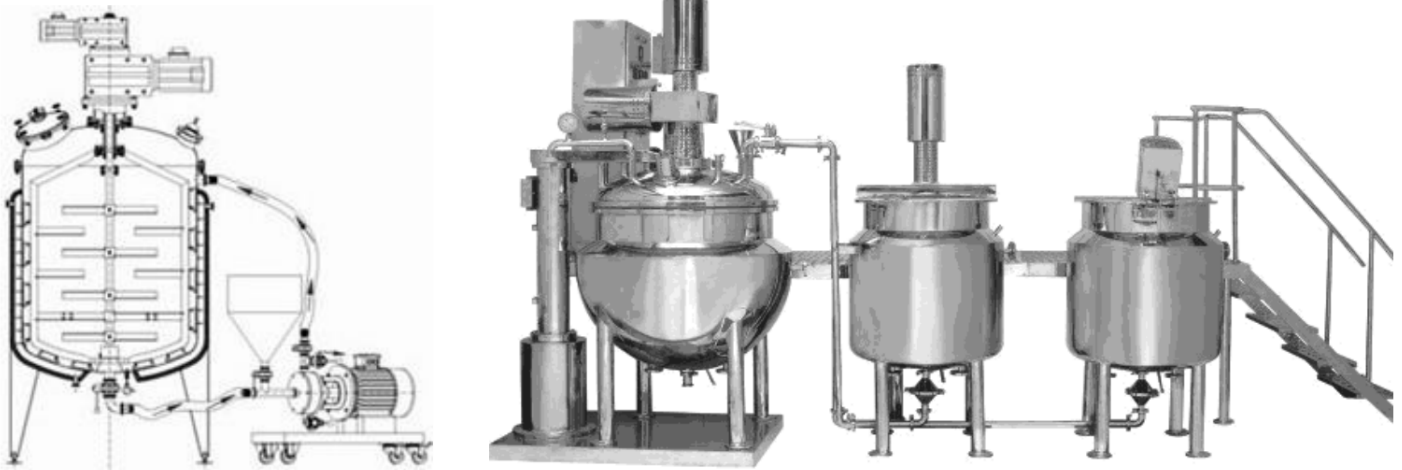
- SINGLE PASS CLEAR FILTRATION.
- FULL BATCH RECOVERY OF THE FILTERATE.
- NO SCAVENGING OF THE FILTERATE.
- COMPLETE CAKE RETAINS ON THE PLATE.
- UNIFORM DISTRIBUTION OF CAKE ON EACH PLATE.
- REDUCE THE COST OF TREATMENT OF CATALYST, TOXIC CHEMICALS.
- LESS EXPOSURE TO THE OPERATING PERSON.
- NO CONTAMINATION OF THE INTERNAL SURFACE OF THE SHELL.

# OINTMENT CREAM MANUFACTURING PLANT / CONTRA MIXER

## APPLICATION :

**PHARMACEUTICALS :** CREAMS, GELS, STERILE & NON STERILE OINTMENTS AND BIOTECH PRODUCTS.

**COSMETICS :** GOLD CREAMS, HAIR DYE CREAM, CONDITIONERS, LOTIONS, GELS, MASCARA MAKE - UP, SHAMPOO, TOOTH PASTE.



### MAIN VESSEL

- Choice of various type of anchor design. Homogeniser (option) — Top Entry, side Entry, Bottom Entry with circulation facility.
- Hydraulic lid lifting for fast & easy cleaning of top dish & vessel. Load Cell for fast & accurate measuring system.
- Flexible product transfer pipe & fitting in case of load cell & hydraulic lifting. VFD for Anchor agitators to vary the RPM.
- VFD for Homogeniser to vary RPM.
- Specially Design drives assembly.
- The main function are mixing and emulsifying. This in the broader sense means producing very fine emulsions,
- Jacket have heating & cooling with temperature contra! with Safety equipment. Electro polished Pipeline and joints are TG standard for easy opening & re-fixing.

### VESSEL & INTER CONNECTING PIPELINE :

- No Air contamination. / Human contamination Cleaning In Place cycles with validation protocols.

### WAX & WATER VESSEL

- Open top with top Entry agitator Cowl disc type or paddle with Slow Speed Anchor. Close top with top/bohom entry agitator Cowl disc type or propeller type stirrer.
- Open top with top entry propeller stirrer. Close top with boüom or top entry propeller.

**WOKING CAPACITY : 5 KGS TO 3500 KGS**

## SINGLE TO FOUR STAGE HIGH SHEAR INLINE HOMOGENIZER





## **LIQUID ORAL / SUGAR SYRUP MANUFACTURING PLANT**

**MODEL AVAILABLE : 500 LTRS 15000 LTRS CAPACITY**

The plant is designed to be operated by one operator and one helper, saving on precious man power costs. Sugar syrup and Syrup manufacturing vessels are provided with Jacket for heating and cooling, designed for internal vacuum to facilitate transfer of sugar directly from stores to sugar syrup vessel.

Sugar syrup is transferred to manufacturing vessel through online sugar syrup pre filter by vacuum. Entry of all propeller agitators are from bottom through a specially designed cartridge mechanical seal with TC / TC face

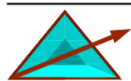
The advantage of the bottom propeller agitator over the conventional agitators that there are no vibration of shaft, No couplings in the drive assembly. Leading to lower maintenances cost.

Pipes, pipe fittings and valves are of SS316, seamless internally electro polish with TC union and silicon gaskets, Manhole of all the vessels are equipped with davit fitting and the cover of the manhole slides instead of being lifted.

### **CONTROL :**

Values like current product temperature are displayed digitally on the electrical control panel.

- |   |   |
|---|---|
| • Sugar Syrup Vessel                        | Online sugar syrup prefilter                  |
| • Manufacturing Vessel                      | Storage Vessel                                |
| • Vacuum system for transfer of sugar syrup | Zero Holdup Filter press & Inline Homogeniser |
| • Product piping                            | Control panels                                |



## **PharmaChem Cosmetics Industries**

**WE MANUFACTURERS MACHINERY & EQUIPMENTS FOR PHARMACEUTICAL, BIO PHARMA, BULK DRUG, FORMULATION, API, AYURVEDIC, HERBAL, FOOD, COSMETIC, CHEMICAL & BEVERAGES INDUSTRIES.**

**9 B / 14, RAM NAGAR, PREMSAMBANDH CHS, NEAR ASHOK NAGAR ROAD, BHANDUP - EAST, MUMBAI 400 042**

**SALES : +91 836 952 4009**

**WEB : [www.PharmaceuticalMachineMumbai.com](http://www.PharmaceuticalMachineMumbai.com)**

**GST : 27ARUPP3866G1Z1**

**EMAIL : [Pharmachemcosmetics@gmail.com](mailto:Pharmachemcosmetics@gmail.com)**

